

**PART II**

**LITERACY: MAKING INFERENCES & CITING EVIDENCE**

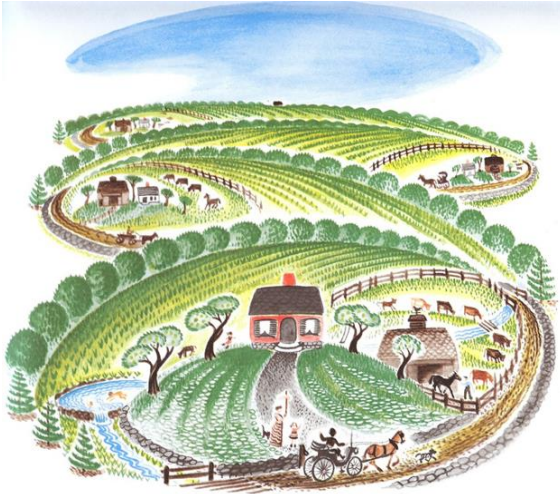
*Target*

I will make *INFERENCES* from texts and cite supporting *EVIDENCE*.

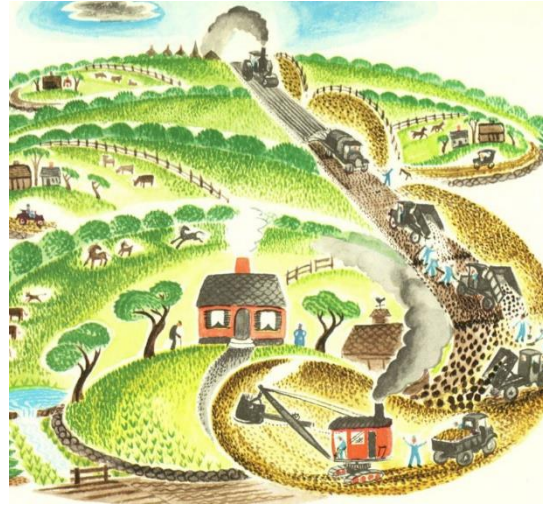
*Instructions*

Examine the content in the boxes below, which show scenes from Virginia Lee Burton's The Little House. Then respond to the questions about infrastructure and economic development.

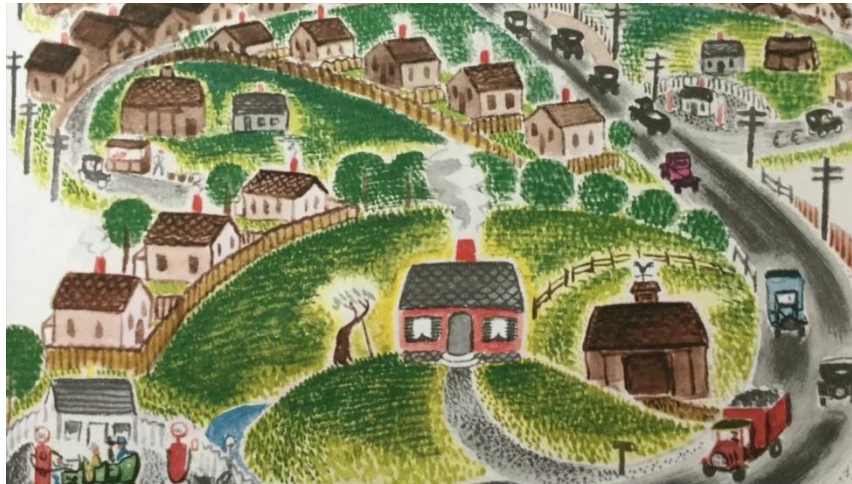
Scene 1



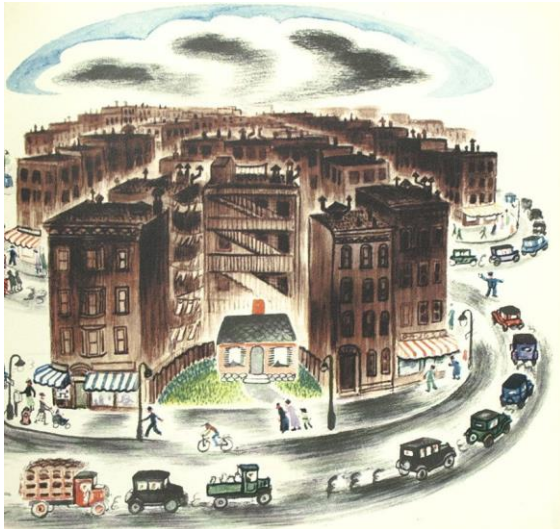
Scene 2



Scene 3



Scene 4



Scene 5

